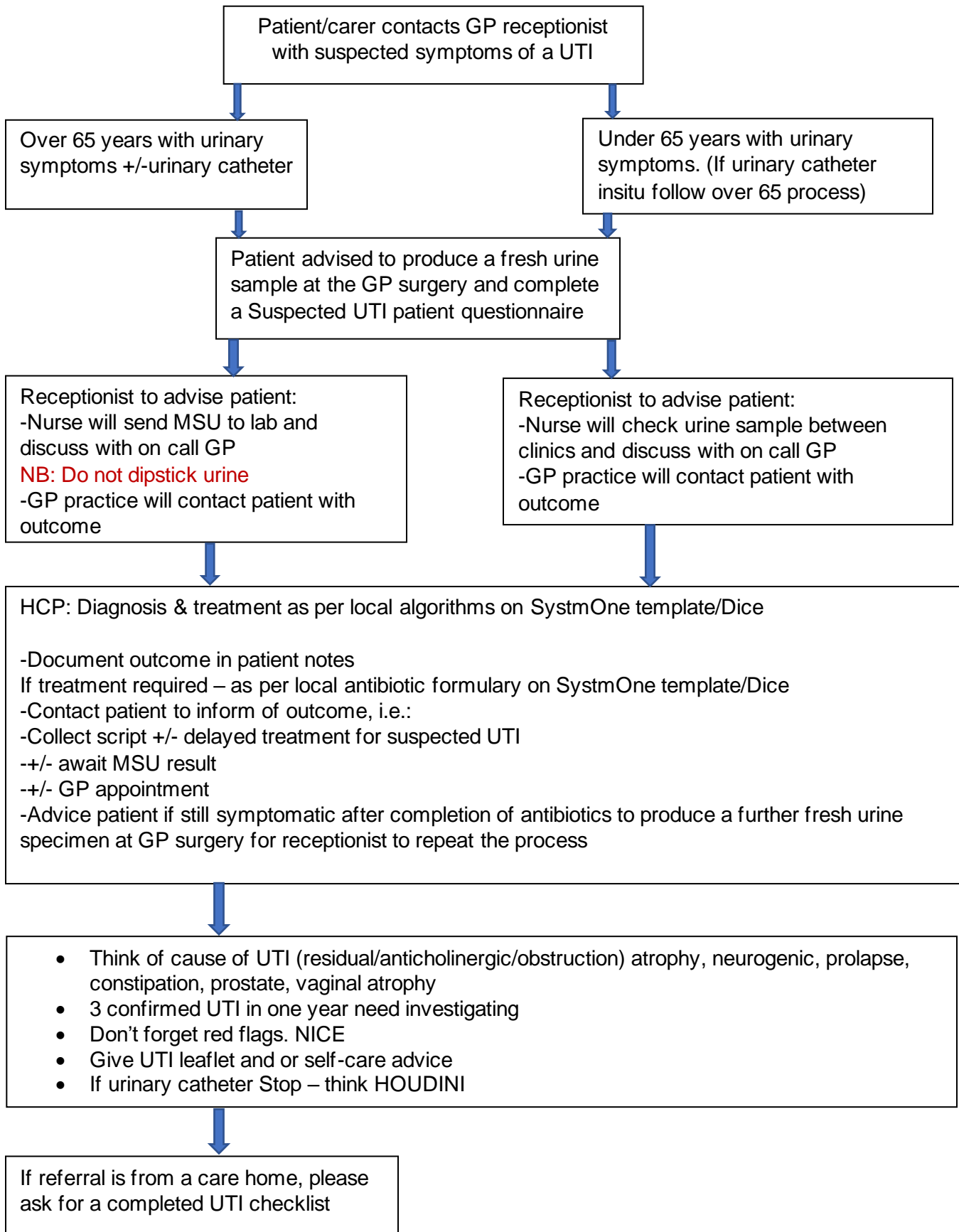


GP Practice internal process for suspected urinary tract infection (UTI)



Links to national and local guidance

PHE Diagnosis of urinary tract infections, Quick reference tool for primary care for consultation and local adaptation:

<https://www.gov.uk/government/publications/urinary-tract-infection-diagnosis>

UTI diagnosis in adults: Guide for General Practice:

<https://www.infectionpreventioncontrol.co.uk/content/uploads/2022/10/UTI-diagnosis-in-adults-Guide-for-General-Practice-October-2022-version-2.00.pdf>

General Practice guide: diagnosing suspected UTI in catheterised adults OR those over 65 years:

<https://www.infectionpreventioncontrol.co.uk/content/uploads/2022/06/General-Practice-guide-Aid-for-diagnosing-UTI-June-2022.pdf>

Local prescribing, link to Norfolk and Waveney primary care formulary:

<https://www.knowledgeanglia.nhs.uk/LinkClick.aspx?fileticket=ov-DF9nuNPw%3d&tabid=2326&portalid=1&mid=3274>

NICE How should I assess a person with suspected UTI? Red Flags:

<https://cks.nice.org.uk/topics/urinary-tract-infection-lower-women/diagnosis/assessment/#:~:text=Red%20flags%20such%20as%20haematuria,serious%20illness%20such%20as%20sepsis.>

Care Home UTI

checklist:<https://www.knowledgeanglia.nhs.uk/LinkClick.aspx?fileticket=VsXtgExXbgw%3d&portalid=1×tamp=1697815212258>

Link to Eastern Pathology Alliance (EPA):

www.easternpathologyalliance.nhs.uk

EPA instructions for collection of microbiology specimens by patients –mid-stream urine (MSU):

<https://www.easternpathologyalliance.nhs.uk/wp-content/uploads/EWM-D-004-Info-for-patient-collected-specimens-MSU.pdf>

NHS England Urinary catheter tools including HOUNDINI

<https://www.england.nhs.uk/patient-safety/urinary-catheter-tools/>

RCGP Target Urinary tract infection resource suite

<https://elearning.rcgp.org.uk/mod/book/view.php?id=12652>

Improving Device-Related Infection Prevention Practice (DRIPP)

<https://dripp.org.uk/Resources/>

Summary of Best Practice to Prevent CAUTI

<file:///C:/Users/amesjud/Downloads/Summary%20of%20evidence.pdf>